








## What's coming up at Happy Valley...



<u>Monday, Nov. 24</u>	<u>Tuesday Nov. 25</u>	<u>Wednesday Nov. 26</u>	<u>Thursday Nov. 27</u>	<u>Friday Nov. 28</u>
			<b>Canned Beans &amp; Veggies</b> 	<b>Panago</b> <b>Peanut Butter and Jam</b> 

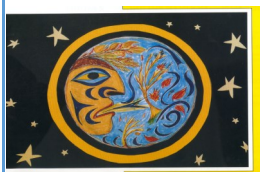
### **12 Days of Kindness & Toonies for 10,000**

Happy Valley is supporting the Royal Bay Leadership students in their Toonies for 10,000 campaign! Students are encouraged to bring a toonie to school, and all donations collected at Happy Valley will go toward helping the Royal Bay team reach their goal. Join us as we spread kindness throughout our community! All contributions—both toonies and food donations—will support the Goldstream Food Bank, helping local families and community members in need. There is no need to participate every day—simply choose an item or two you'd like to contribute and send it on the corresponding day. Every donation makes a meaningful difference! Please note: All food items must be non-perishable and unopened. Thank you for your generosity and kindness this season!

**Help Keep Our Community Healthy**—As we spend more time indoors during the cooler months, communities often see an increase in various communicable diseases and our schools are no different.

The BC Centre for Disease Control has shared a [Quick Guide to Common Childhood Diseases](#), which includes helpful information about: How infections are spread; Ways to stop the spread of infections; Healthy habits to prevent illness; Common childhood diseases

**Student Arrival**—By now most students should be settled into their classrooms and be comfortable finding their way to their classroom from the office. If they arrive after the 8:40 bell, students should come to the office to check in, then independently make their way to their classroom. If a parent/guardian needs to visit any part of the school beyond the office they are required to check in at the office and wear a visitor tag during the visit.



### WESELÁNEW – MOON OF THE SHAKER LEAVES (November)

The leaves are ready to fall. The wind comes. Turbulence is felt in the waters and the skies. The earth is cooling down

### **Upcoming Dates:**

December 10—Winter Concerts (1pm & 6:30pm) - see attached schedule  
 December 11—Winter Concerts (1pm & 6:30pm) - see attached schedule  
 December 12—Kernels Popcorn  
 December 12—final day of 12 Days of Kindness  
 December 19—Subway  
 December 19—last day of school before winter break  
 December 20—January 5—Winter Break

The district calendars with all holidays and Pro-D days can be found at [SCHOOL DISTRICT NO](#)

Need to translate this document? [translate](#)